

BHMFit contact mini

&

BHMFit contact star evo1

Server Installation Instructions

CONTENTS

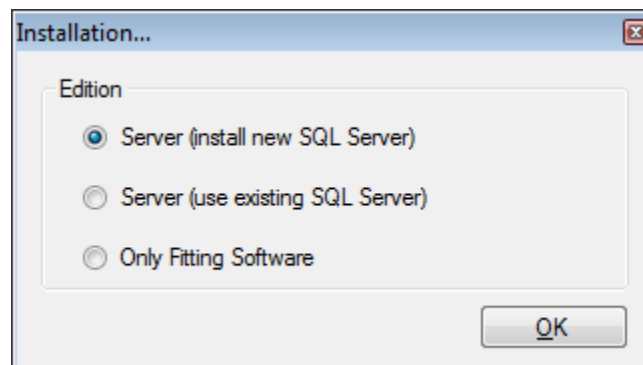
1	SERVER INSTALLATION	3
2	CLIENT INSTALLATION.....	5
3	SILENT INSTALLATION.....	6

1 SERVER INSTALLATION

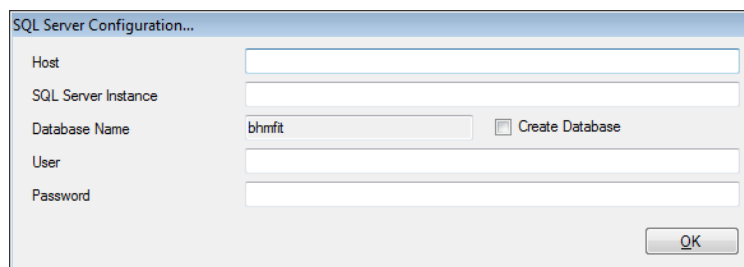
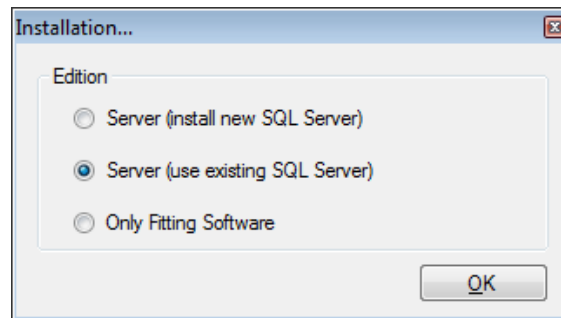
- 1.) Open **BHMSetup.exe**
- 2.) Choose Fitting software (only contact mini and contact star evo1 support silent installation)
- 3.)



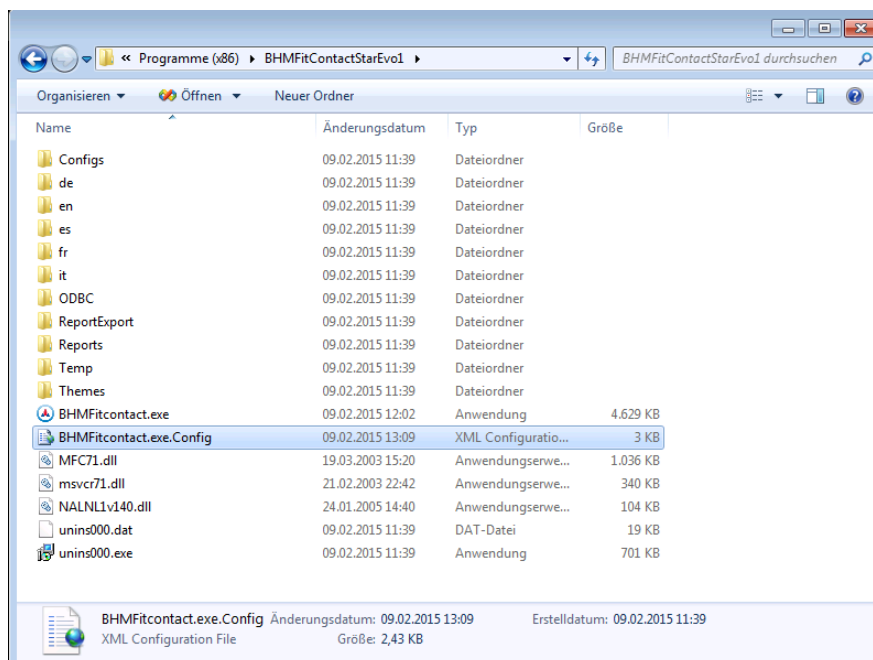
- 4.) Choose Edition
 - a. Server (install new SQL Server): Fitting software and SQL Server 2008 Express R2 will be installed (SQL Server will only be installed if not present)



- b. Server (use existing SQL Server): Fitting software will be installed. SQL Server Configuration will be started



- 5.) Update connection string in application configuration
a. Open installation directory



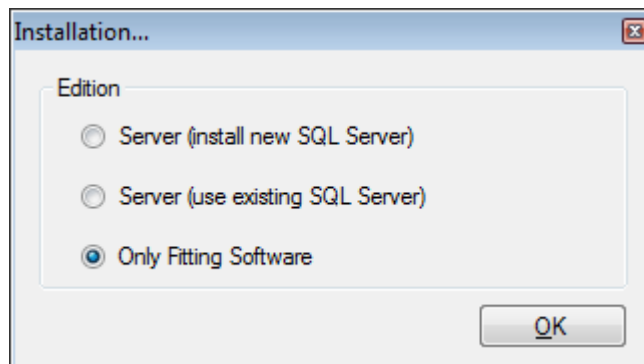
- b. Open **BHMFitcontact.exe.Config** with a Text-Editor
c. Edit the value of the key **SqlDb.ConnectionString** (change localhost to the real host name)
d. Save config and start Fittingssoftware
e. The file **BHMFitcontact.exe.Config** can be used for all client installations.

2 CLIENT INSTALLATION

- 1.) Open **BHMSetup.exe**
- 2.) Choose Only Fittingsoftware (only contact mini and contact star evo1 support silent installation)



- 3.) Choose Edition: Only Fitting Software



- 4.) Replace **BHMFitcontact.exe.Config** with config file from server

3 SILENT INSTALLATION

Use file **Setup_BHMFitContactMini_vx.x.x.x** or **Setup_BHMFitContactStarEvo1_vx.x.x.x.exe**

1.) Start the Installer with the following parameters

- a. C:\Setup\Setup_BHMFitContactMini_vx.x.x.x.exe /SILENT
/DIR="C:\MyFolder\BHMFitContactMini\
/MERGETASKS="desktopicon,fileassoc"
- b. MyFolder represents the destination/installation folder
- c. Replace BHMFitcontact.exe.Config with the config file of the server



BHM-Tech Produktionsgesellschaft mbH
Grafenschachen 242
7423 Grafenschachen
Austria
www.bhm-tech.at

